



evja

Helping farmers to make the best decisions.

THE PROBLEM

FIELD PRESENCE

CRITICAL EVENTS

HEALTHINESS



THE SOLUTION



FIELD PRESENCE

CRITICAL EVENTS

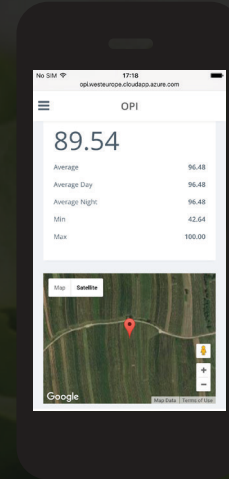
HEALTHINESS



FEATURES



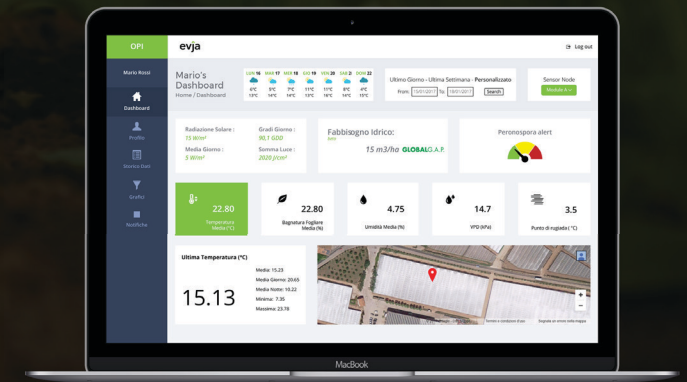
Works Everywhere
Lora network (300,000 Ha)



1st predictive model in EU
for lettuce



In-house Development



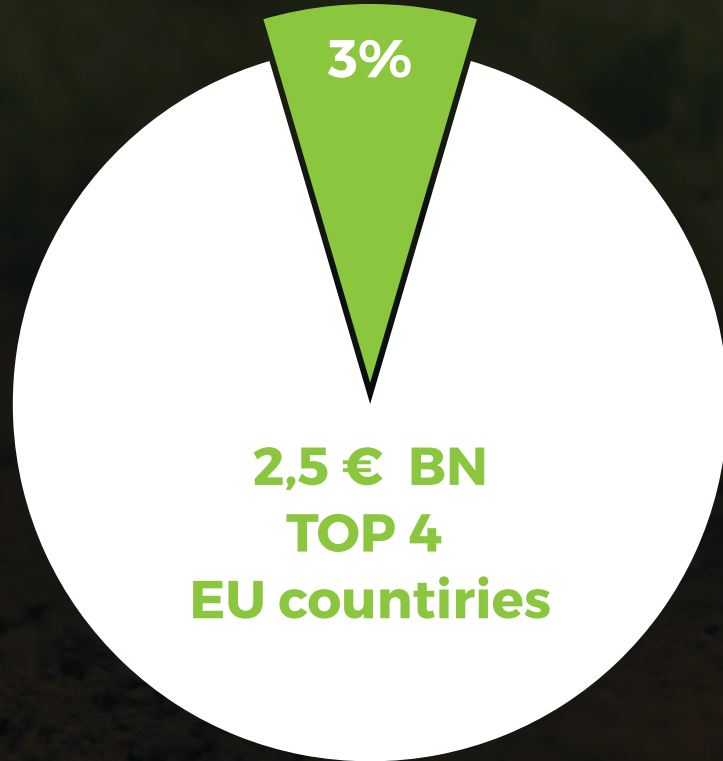
ADVANTAGES

evja

**Cost per chemicals:
-10%**

**Global Gap
compliant**

THE CUSTOMER



HIGHLY INDUSTRIALIZED

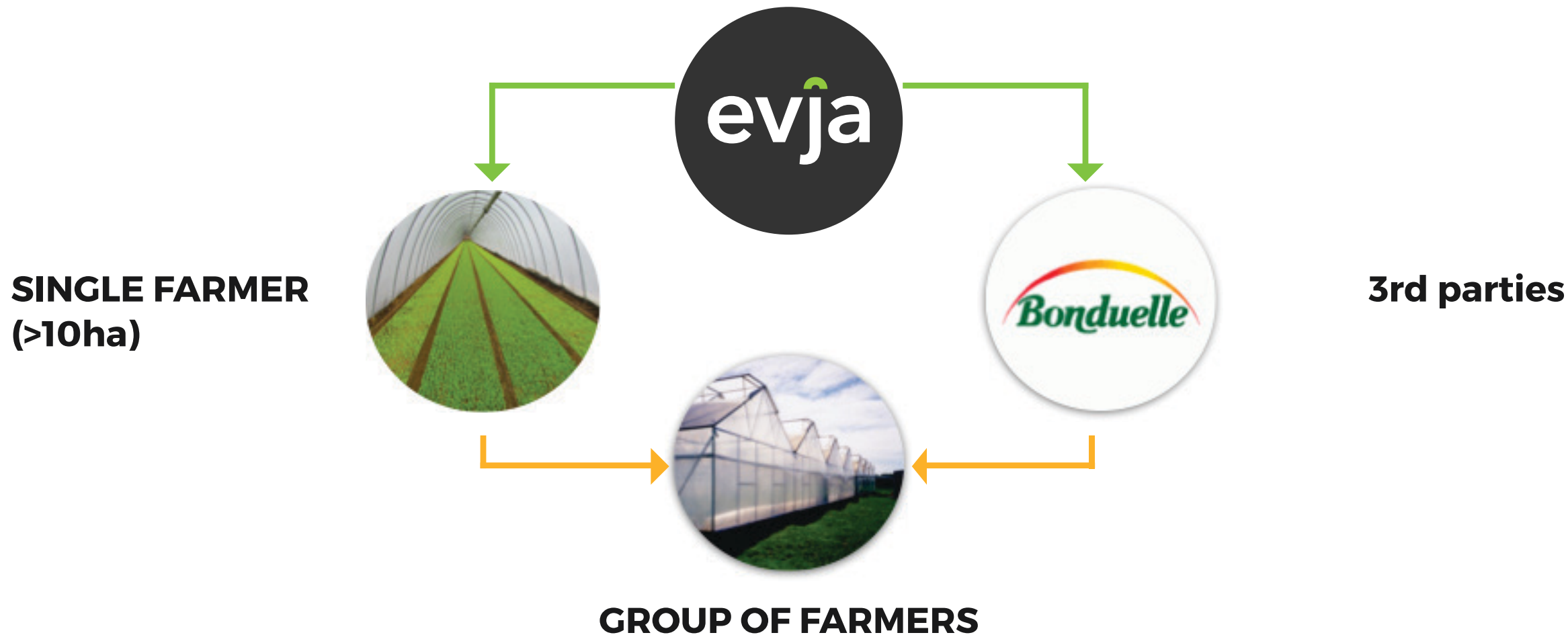
UP TO 10 HARVEST PER YEAR

NO DIRECT COMPETITORS

COMPETITORS



GROWTH STRATEGY



REVENUE MODEL



**1,600 €
per 3 HA**



**250 €
after 1st year**



**11,000 €
1 customer /
2 years**



**Gross margin
50%**

THE TEAM



Davide Parisi
CEO



Antonio Affinito
CTO



Luciano Zarulli
CIO



Paolo Iasevoli
CSO

THE TEAM



Giovanni De Caro
Advisor



Maurizio Pagano
Senior developer



Marco Valerio Del Grosso
Agronomist



Stefano Grasso
Marketing Assistant



Giuliano Bonanomi
Pathologist

ACHIEVEMENTS

evja



TRACTION

evja

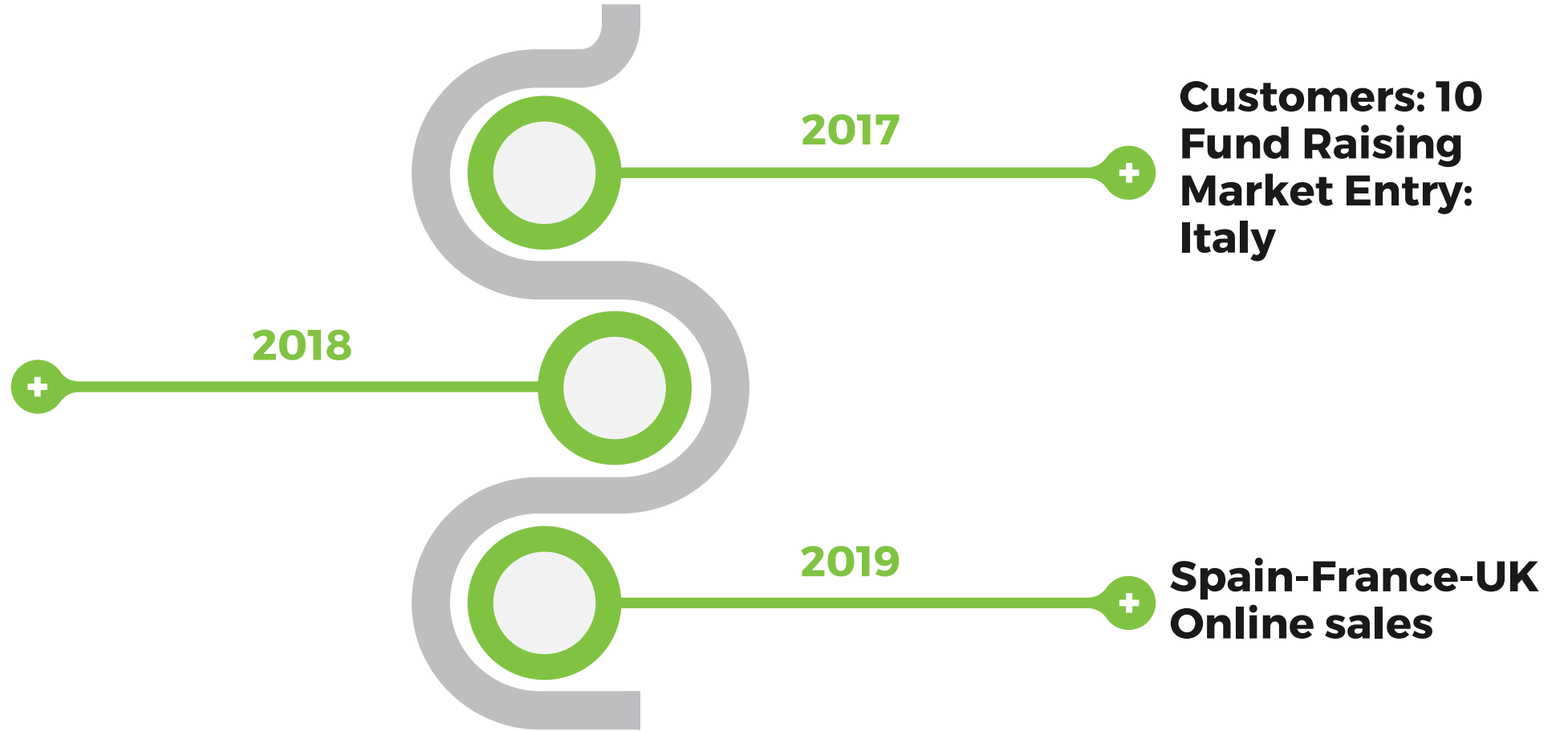


QUALITY 2004

ROAD MAP



Customers: 200
Revenues: 2 M €



A NEW STORY

evja



info@evja.eu

www.evja.eu

+39 0810065000

CONTACT



EVJA srl

p.iva: 08124081210

info@evja.eu

www.evja.eu

+39 0810065000



<https://facebook.com/evja.official>



https://twitter.com/evja_



<https://linkedin.com/company/evja>